



The Yardarm

October 2009

A Publication of *THE NEW LONDON POWER SQUADRON*
a Unit of District 1, United States Power Squadrons®.

SAIL AND POWER BOATING
Chartered 14 April, 1939



The Cdr's View

Chris Jordan, AP



Hello everyone.

Well I guess that our very short summer is over. This has been the strangest weather for summer that I can remember for some time. It seems that it rained for three straight weeks in June, and then plenty more rain in July. Oh well, we make the best of it. Fall is here and it is a beautiful time of year to go boating. We still have a few warm days left. Bluefish and Stripers are running strong, blackfish season is here, and the tuna are jumping in the boat, if you can get to them. I am a die hard. I don't pull my boat until early November. Some of the best days of our boating season may still be ahead. Don't despair!

I had a great summer with the Squadron, and also with the Sea Scouts. There are plenty of activities to do with the Squadron during the summer months. We had a great turnout for the D1 Rendezvous at Seaport Marine in Mystic. Great food, great camaraderie, and great people. We also had a strong showing for our safety days at Spicer's and at Burrs. Many boats were inspected and many T-Shirts were given out.

Everyone had a great time at the 70th Anniversary Lobster/Clam bake. I would like to extend a very special thank you to Eleanor Mariani for being gracious enough to host the party at her home. The weather was fantastic. A good time was had by all. I am looking forward to next year as this will be an annual event.

The D1 Sail race off of Westbrook was a fun

event to participate in. I served as Race Committee Chairman and used my boat as the committee boat. The participating sailboats this year were DOUBLE what they were last year. We had our hands full. The winds were just right. Everyone had a great time at the cookout. I can still taste that perfect corn on the cob.

My highlight of the summer was working with the Sea Scouts for a day at Camp Nautical. It is great to see such enthusiasm in young adults. I am looking forward to helping out next year. I think that any time that the Squadron invests time in the Sea Scouts is surely time well spent. The adults had just as much fun as the Sea Scouts. I also had a great time giving a few hours to help review some piloting exercises in the beginning of the summer at the "Dragon's Lair". This was followed up by a short training cruise on mine and Tony Salzarulo's boat. It was a great time spent with enthusiastic young adults who are just as excited about being on the water as I am.

As I said, the season is not over yet. I plan to fish until early November. If anyone is feeling adventurous and would like to chase some fall fishy critters, please give me a shout. I am always looking for people to go fishing with. *Continued page 2*

INDEX

1—Commander's Message

2—The 2009 –
2010 Bridge;
Calendar of
Events;



5— Rules to Live By

3— SCO Report;

6— **NLPS MEMBERSHIP MEETING**; Fees for Recreation Double as of Oct. 1.

4— 2009 Change of Watch Fun

7— Looking Back



Visit us at: <http://www.newlondonpowersquadron.org>

2009- 2010 Bridge of the NLPS

Commander	Cdr. Christopher Jordan, P	pelagic104@sbcglobal.net	
Executive Officer	vacant		
Administrative Officer	Lt/C Truxton Brodhead	Marybrodhead@sbcglobal.net	(860) 460-5081
Secretary	Lt/C Eleanor Mariani, AP	eleanor_c_mari8123@sbcglobal.net	(860) 442-8007
Treasurer	Lt/C Jon. D. Peterson, AP	guide@rental_guide.com	(860) 444-2808
Educational Officer	Lt/C Harrison L. Jewett, SN	ht_juet@sbcglobal.net	(860) 443-6499
Asst. Educ. Officer	1st Lt Christopher Wick, JN	mischief@snet.net	(860)536-1840
Asst. Treasurer			
Membership	vacant		
Past Commander	P/C Anthony Salzarulo	Salzarulo@comcast.net	(860) 267-7073

The Yardarm

THE PUBLICATION OF THE NEW LONDON POWER SQUADRON,
A UNIT OF THE UNITED STATES POWER SQUADRONS®

PUBLISHER: RUTH MACDONALD, S
332 S. BURNHAM HWY
LISBON, CT 06351
(860) 859-9600
MACDORE@SBCGLOBAL.NET

EDITOR: ELEANOR C. MARIANI, AP
16 WILSON AVENUE
QUAKER HILL, CT 06375
(860) 442-8007

THE YARDARM IS PUBLISHED MONTHLY WITH THE EXCEPTION OF THE MONTH OF JULY. JUNE AND JULY ARE PUBLISHED AS A COMBINED SUMMER ISSUE.

SUBMIT ARTICLES TO: EDITOR AT ABOVE ADDRESS OR, VIA EMAIL TO ELEANOR_C_MARI8123@SBCGLOBAL.NET



CALENDAR

www.newlondonpowersquadron.org



NLPS Events

19 Oct — Membership Meeting, Custom House, New London, 6:30 pm (see pg 1 for more details!)

9 November — Executive Board Meeting, Stone, Ridge Retirement Community Room, 186 Jerry Brown Road, Mystic (Exit 90), 1900.



Other Events

14 Nov — D/1 Fall Conference



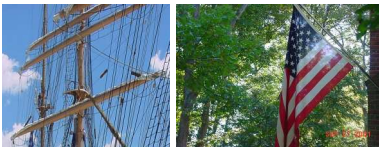
P/C Bob and Genevieve Smith
Have Moved
They are happy to share
Their new address:
5309 Ashlar Village
Wallingford, CT 06492

(Continued from page 1)

Please join us for our October meeting. It is a great time to get together and catch up. It is also a great time to meet our new members. If you are a new member, please join us. Don't be bashful. Don't be shy. We would love to get to know you.

Fair Winds and Tight Lines

Commander Chris Jordan



SEO News

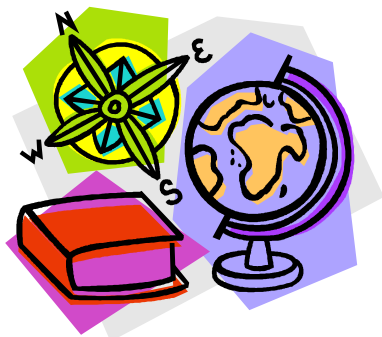
Lea Jewett, SEO



America's Boating Course 3rd Edition will be started September 22 at the Waterford High School. Proctors and volunteers are greatly appreciated in helping students get to know about boating in general and New London Power Squadron in particular.

Navigation 09 will be started September 23rd at 7pm at the Waterford Police Department. This course will run about 15 weeks not counting holidays and should end in late January or early February. The course is newly revamped and includes celestial navigation with electronic navigation integrated into the course. It should be interesting for the students as well as the instructor. For those who would like to see what is offered in the class use the following link: <http://www.newlondonpowersquadron.org/classesandregistration/membercourses.html>

I would like to run an elective course as NLPS has the Waterford Police Dept class room through end of December 2010. Electives include : Weather, Marine Electronics, Cruise Planning, Sail. Any suggestions please feel free to contact me.



ELECTIVE COURSES

Six Elective Courses are offered by USPS. They cover separate and independent topics and therefore may be taken in any order according to a member's interests and time.

Marine Electronics covers installation and maintenance of both boat electrical systems (AC and DC) and marine electronics (VHF radio, radar, GPS, etc).

Cruise Planning covers topics of interest for someone planning a cruise – whether for just a weekend or for a year – including preparation and planning, anchoring, security, chartering, and cruising outside the US.

Engine Maintenance covers the operating principles and basic care and maintenance of outboard and in-board engines, including diesels.

Weather covers weather forecasting and reading weather patterns on-board.

Sail covers everything from the basic elements of how a sailboat works to sail trim, rig tuning, and sailboat racing.

Instructor Development teaches effective communication skills for not only USPS instructors but everyone, covering various methods of presenting information to others, effective use of audiovisual aids (including PowerPoint), etc.



NLPS celebrates 70th Birthday!



Ellen Barbour

Doreen Sharkey Salzarulo

Tony Salzarulo



Susan Lecte

Bob Lecte

Leo MacDonald



Karen Volkmar

Joe Jordan



Our Hostess

Eleanor Mariani



Doreen Sharkey-Salzarulo



Eleanor Mariani

Cdr Chris Jordan

Karen Volkmar

Joe Jordan

Susan Lecte

Lots of Sun,
Fun, Food



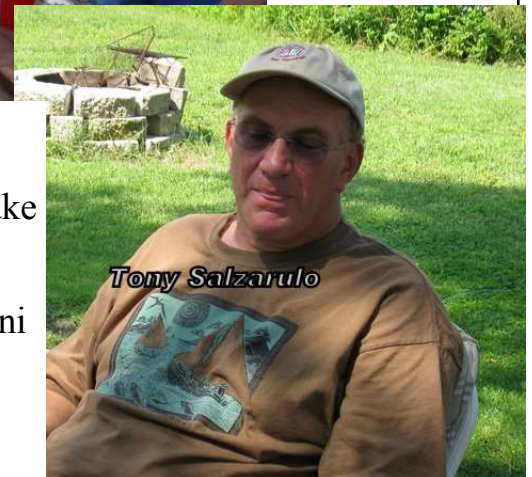
Karen Volkmar

Joe Jordan

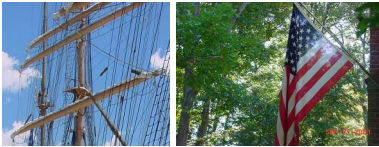
Cdr Chris Jordan

Trux Brodhead

Lobster/ Steamer Bake
at home of
Lt/C Eleanor Mariani
Jul 25, 2009



Tony Salzarulo



Rules to Live By

By Jack Kurrus, SN



In this issue we will continue looking at the Rules of Part C ,Lights and Shapes, focusing on Rules 23 which describes the light requirements for Power Driven Vessels.

Rule 23 –Definitions

Note: International and Inland Rule

23 virtually the same. Inland Rules differences will be

included in italics.

(a)A power driven vessel underway shall exhibit:

(i) a masthead light forward; *except that a vessel of less than 20 meters in lengthened not*

exhibit this light forward of amidships but shall exhibit it as far forward as is practicable.

(ii)a second masthead light abaft of and higher than the forward one; except that a vessel

of less than 50 meters in length shall not be obliged to exhibit such a light but may do so;

(iii)sidelights;

(iv) a stern light.

(b)An air-cushion vessel when operating in the non-displacement mode shall, in addition to

the lights prescribed in paragraph (a) of this Rule, exhibit an all-around flashing yellow

light where it can best be seen.

(c)(i)A power-driven vessel of less than 12 meters in length may in lieu of the lights

Prescribed in paragraph (a) of this Rule exhibit an all around white light and sidelights;

(ii)a power driven vessel of less than 7 meters in length whose maximum speed does not

exceed 7 knots may in lieu of the light prescribed in paragraph (a) of this Rule exhibit an

all-around white light and shall, if practicable,

also exhibit sidelights;

(iii)the masthead light or all around white light on a power driven vessel of less than 12

meters in length may be displaced from the fore and aft centerline of the vessel if

centerline fitting is not practicable, provided that the sidelights are combined in one

lantern which shall be carried on the fore and aft centerline of the vessel or located as

nearly as practicable in the same fore and aft line as the masthead light or the all-around

white light.

(d)A power driven vessel when operating on the Great Lakes may carry an all-around white

light in lieu of the second masthead light and sternlight prescribed in paragraph (a) of

this Rule. The light shall be carried in the position of the second masthead light and be

visible at the same range.

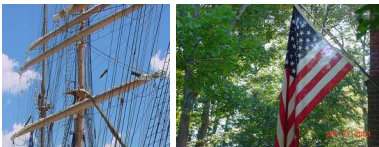
Note 1: Sub paragraph's (c)(ii) and (c)(iii) are only found in the International Rules and not

the Inland rules.

Note 2: Sources for this article were:

(a) Handbook of the Nautical Rules of the Road – Llana &Wisnesky

(b) Farwell's Rules of the Nautical Road – Craig H. Allen



Membership Meeting

When: Monday, 19 October

**Where: Custom House
150 Bank Street
New London, Ct**

What Time: 6:30 pm—9:00pm

**Come eat a light dinner and enjoy a tour of the Custom House.
Short business meeting.**



The Custom House's permanent displays include exhibitions on the **Amistad Incident**, **Customs & Contraband**, **Regional Lighthouses**, **US Customs Today**, and New London's storied **Jibboom Club**, and the newly reinstalled abridged version of last summer's favorite: *Two Lives of the Grandma Sue*.

Cost: \$15 per person—includes assorted grinders, apple cider and admission fee (\$8.00)

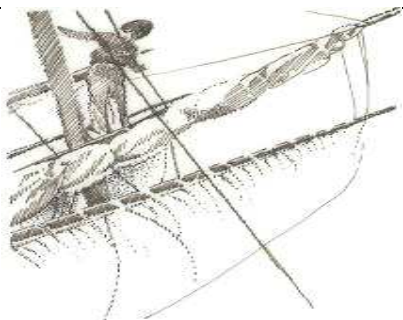
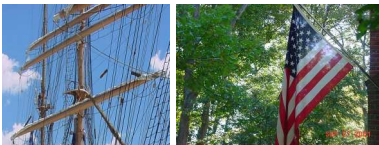
Desserts to share are welcome!!

DEP FEES for Recreation Double



The new state budget increases fees charged by state agencies for various programs and services effective October 1, 2009. These increases apply to many of the fees charged by the Department of Environmental Protection (DEP) for outdoor recreational activities as well as for licenses and permits necessary for environmental protection. Generally speaking, fees for recreational activities will double. This includes state park fees for parking, reserving a campsite, rental of facilities and admission to state park museums; fees for boating certificates; and the cost of hunting and fishing licenses. Sportsmen licenses and permits are sold through authorized agents or [on-line](#). Campground reservations for all state campgrounds are available on-line at [Reserve America](#). Other recreational fees are collected at the point of entry or through existing program offices. On and after October 1, 2009 all of these systems will reflect the new fee for sportsmen licenses and recreational fees.

Boating Related Fee	Regulatory Section	Current Amount	New Amount
Equivalency Exam	15-140f-4	\$25.00	\$50.00
Equiv. Exam retake		\$10.00	\$20.00
Safe Boating Certificate (SBC), Temporary SBC		\$25.00	\$50.00
Duplicate SBC		\$10.00	\$20.00
Certificate of Personal Watercraft Operation (CPWO), Temp CPWO	15-140j-3	\$25.00	\$50.00
Duplicate CPWO		\$10.00	\$20.00



Looking Back

OVER THE YARDARM



By Jack Kurrus

25 YEARS AGO

September 1984

FROM THE BRIDGE

Cdr Robinson asked me (*P/C Hubie Warren, N, Chairman of the Boating Course*) to give the message from the Bridge this month. I will take this opportunity to extol the new Boating Course which I received yesterday. I have been through it very carefully and it seems to me that it is more appropriate for the beginner. The homework part is not as strenuous as in previous courses. The answers to home work questions are based on a four-part possibility as is the final examination.

As usual old faithful will help as proctors for which we are thankful, but we are looking for newer members to join and help.

By the time this message reaches you the first class will be over, and we will need proctors to correct homework.

If you are a new member and can:

A. Pass out and collect monies from sale of charts, protractors, books, dividers

etc.

B. Can you explain on a one-to-one basis the use of charts and instruments?

C. Can you make a stranger welcome and tell where the best seats are?

D. Can you correct home work - if you have the answer book?

E. If you can give up an hour on Wednesday nights, 8 p.m. to 9 p.m.

We can use you !! P/C Hubie Warren, N, Chairman, Boating Course

50 YEARS AGO

September 1959

You'll remember that back in January I reported that NLPS had found a new home for there Monthly membership meeting at Tusana Hall on Moore Street in New London. That lasted one month till Tusana Hall burn downed. At the August executive committee meeting the Exec. Committee appointed an ad hoc committee to find another place for the monthly meeting. The September 1959 Yardarm headlined the new meeting place:

MEETING

28 September 1959

U.S. Coast Guard Training Station

Avery Point Groton Conn

